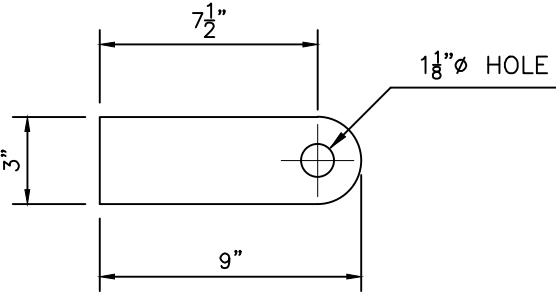


BILL OF MATERIALS					
MK	QTY	DESCRIPTION	LENGTH	TOTAL	LBS.
01	2	CHANNEL, C6 X 8.2	58"	35'-7"	292
02	3	CHANNEL, C6 X 8.2	56 3/16"	-	-
03	2	CHANNEL, C6 X 8.2	27 5/8"	-	-
04	1	CHANNEL, C6 X 8.2 (COPE ONE END)	26 5/16"	-	-
05	1	CHANNEL, C6 X 8.2 (COPE ONE END)	35 1/4"	-	-
06	3	CHANNEL, C6 X 8.2 (COPE ONE END)	12 1/8"	-	-
06	3	CHANNEL, C6 X 8.2 (COPE ONE END)	14"	-	-
07	4	FLATBAR, 3/4" x 3"	9"	3'-0"	23
08	2	CHANNEL, C6 X 8.2	14"	-	9
(APPROX.) TOTAL WEIGHT					324



DETAIL

ITEM# 08
(4) REQUIRED
SCALE=2:1

NOTES

- THIS DRAWING IS NOT TO BE USED FOR CONSTRUCTION UNLESS STAMPED 'ISSUED FOR CONSTRUCTION'.
- ALL DIMENSIONS ARE IN INCHES UNLESS OTHERWISE NOTED.
- ALL WELDS TO BE 1/4" FILLET U.N.O.
- FOUR (4x) 5/8"Ø MOUNTING HOLES LOCATED THROUGH BOTTOM FLANGE ONLY.
- ALL WELDING AS PER CSA W59-M/W47.1-M
- CHANNEL CSA G40.21-44W, CHK. PLATE MILD STEEL
- SKID TO BE PAINTED AS PER NWE SPEC: (1) COAT PRIMER, (2) COATS ENAMEL BLACK.
- SHOP TO CONFIRM BOLTING DIMENSIONS PRIOR TO MOUNTING EQUIPMENT.

REV	DESCRIPTION	DATE	DWN	CHK
3	AS-BUILT	11-11-22	LJ	SK
2	ISSUED FOR CONSTRUCTION	11-10-21	LJ	SK
1	CHANGE IN SKID SIZE	11-10-05	LJ	SK
0	ISSUED FOR APPROVAL	11-09-16	LJ	SK



STRUCTURAL SKID

SIMPLEX COMPAIR HV05 INSTRUMENT AIR PACKAGE

CLIENT	HUSKY OIL OPERATIONS LTD. c/o TRIUMPH EPCM LTD.	SCALE	1:16
LOCATION	TBA	DWN BY	L.JOHNSTON
LSD	TBA	DATE	11-09-14

JOB	DWG	REV
NW895	NW895SK	3