

K-101
AIR COMPRESSOR
COMPAIR HV05
27 SCFM @ 130 PSIG
MAWP: 150 PSIG
C/W 7.5HP MOTOR 1800 RPM
460V/3 PH/60Hz
S/N: V05-001765-1103

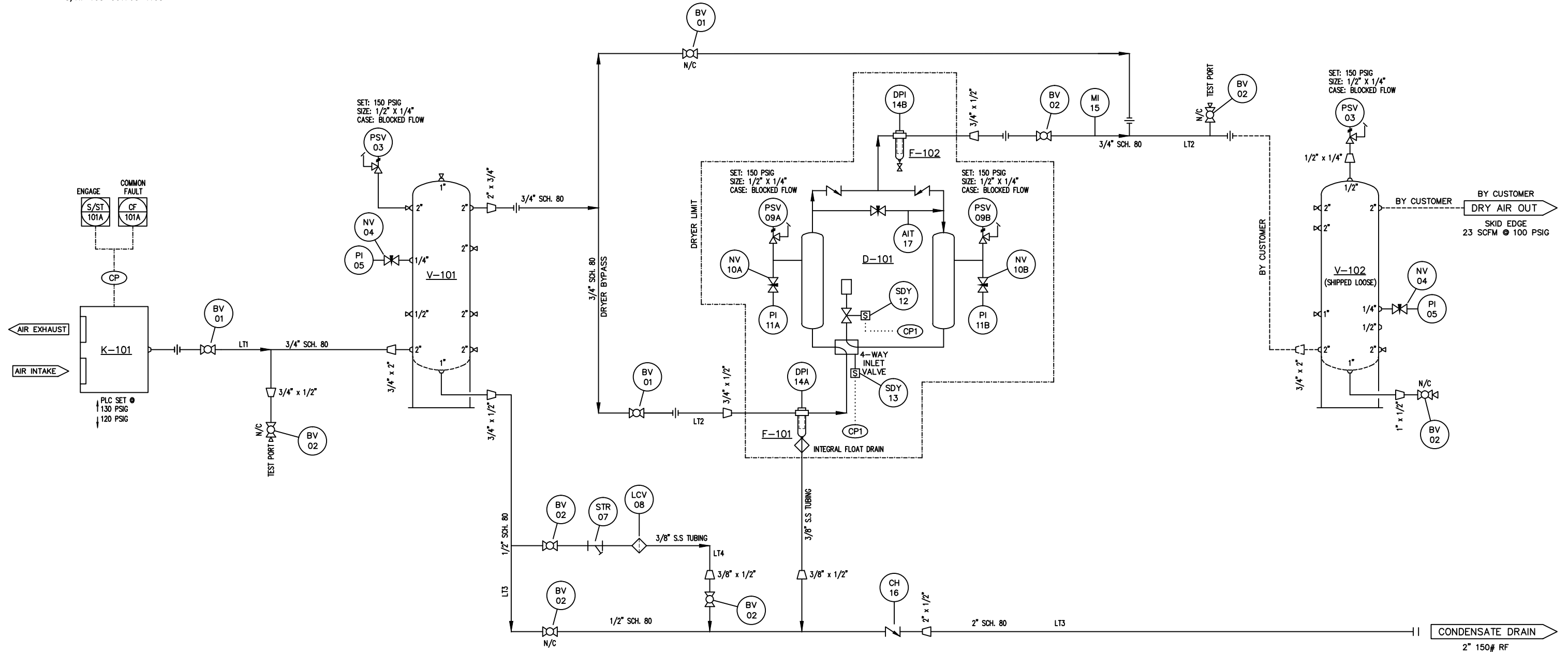
V-101
AIR RECEIVER
STEELFAB A10049 VERTICAL
MAWP: 200PSIG @ 400°F.
MDMT: -20°F @ 200PSIG.
120 GAL., 24" Ø x 67" LG.
S/N: 675341
CRN: L4034.5C

D-101
HEATLESS AIR DRYER
AIRTEK OFC36E
27 SCFM @ 100 PSIG
MAWP: 150 PSIG
115V/1 PH/60 HZ
S/N: 111002371

F-101
PRE-FILTER
AIRTEK COALESCER JC0050-C
50 SCFM @ 100 PSIG
150 PSIG MAWP
0.01 MICRON FILTER

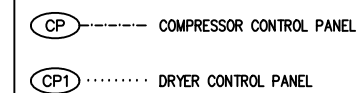
F-102
AFTER FILTER
AIRTEK PARTICULATE JC0050-F
83 SCFM @ 100 PSIG
150 PSIG MAWP
0.9 MICRON FILTER
MANUAL DRAIN

V-102
AIR RECEIVER (SHIPPED LOOSE)
STEELFAB A10053 VERTICAL
MAWP: 200 PSIG @ 400°F.
MDMT: -20°F @ 200 PSIG.
240 GAL., 30" Ø x 84" LG.
S/N: TBA
CRN: TBA



GENERAL NOTES

1. ALL PIPING TO BE DESIGNED IN ACCORDANCE WITH ASME B31.3.
2. MAXIMUM ALLOWABLE WORKING PRESSURE IS 150 PSIG.
3. MAXIMUM ALLOWABLE WORKING TEMPERATURE IS 120 °F.
4. AIR TEST PRESSURE IS 165 PSIG.
5. ALL PIPING TO BE SCH. 80 WALL A106B, ENAMEL PAINTED (WARM GREY) UNLESS NOTED OTHERWISE.
6. ALL PIPE FITTINGS TO BE 2000# A105, ENAMEL PAINTED (WARM GREY) UNLESS NOTED OTHERWISE.
7. DRYER & DRAIN TUBING TO BE STAINLESS STEEL WITH 316SS FITTINGS.
8. COMPRESSOR & DRYER PAINTED AS PER MANUFACTURER STANDARD.
9. DRYER PURGE RATE TO BE SET @ 4.05 SCFM. DRYER SET FOR -40 °F DEWPOINT.
10. ALL BALL VALVES TO BE MA STEWART, 2000# WOG



REV	DESCRIPTION	DATE	DWN	CHK
3	AS-BUILT	11-11-22	LJ	SK
2	ISSUED FOR CONSTRUCTION	11-10-21	LJ	SK
1	REVISED AS PER CUSTOMER MARK-UPS	11-10-05	LJ	SK
0	ISSUED FOR APPROVAL	11-09-16	LJ	SK
REV	DESCRIPTION	DATE	DWN	CHK

PROCESS & INSTRUMENT DIAGRAM	
SIMPLEX COMPAIR HV05 INSTRUMENT AIR PACKAGE	
CLIENT	HUSKY OIL OPERATIONS LTD. c/o TRIUMPH EPCM LTD.
LOCATION	TBA
LSD	TBA
JOB	NW895
DWG	NW895PF
SCALE	NTS
DWN BY	LJOHNSTON
DATE	11-09-15
REV	3