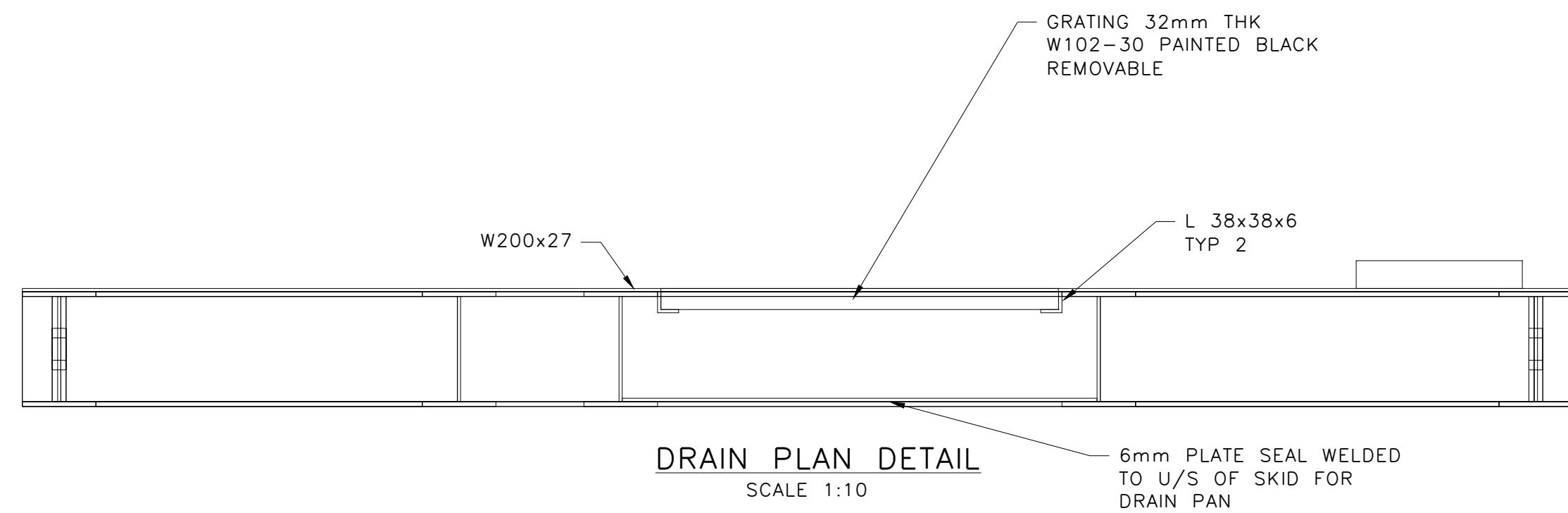
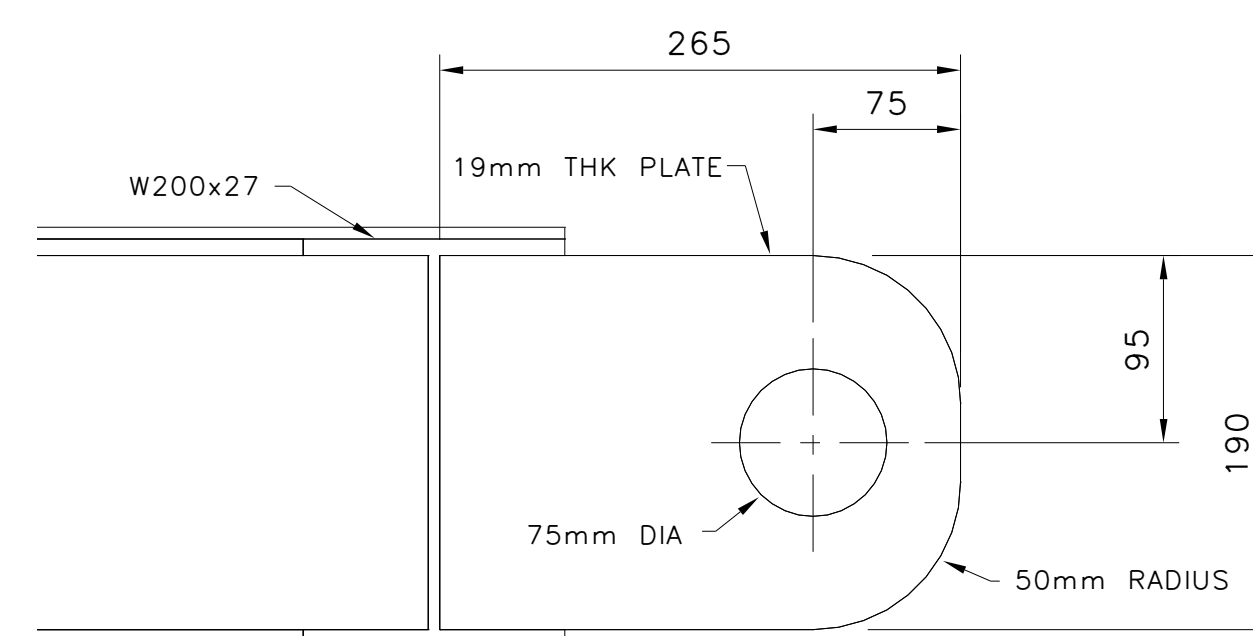


SKID PLAN  
SCALE 1:10



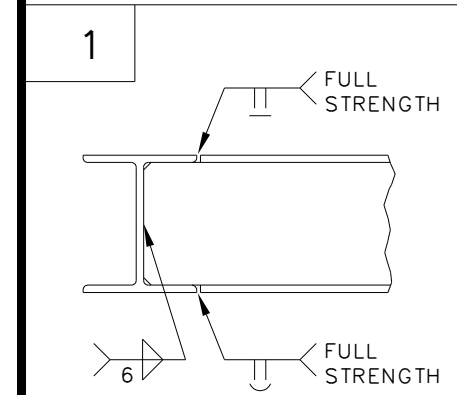
## DRAIN PLAN DETAIL

SCALE 1:10

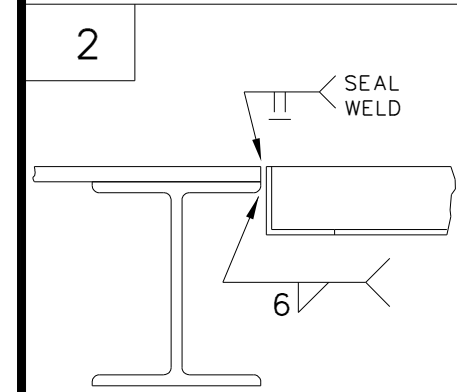
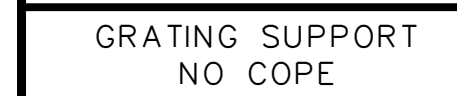


TYP LIFTING LUG DETAIL

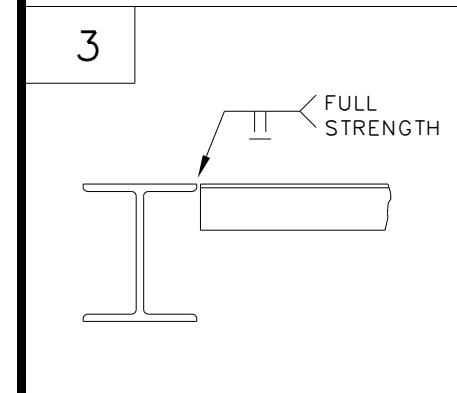
SCALE 1:4



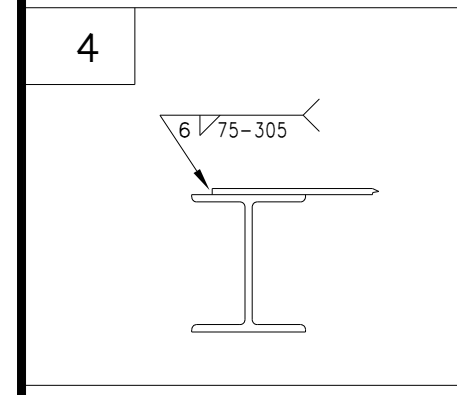
W200x27



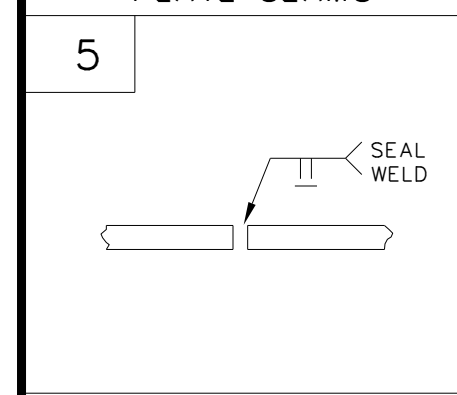
L38x38x6



L75x75x6



6mm THK FLOOR PLATE



6mm THK FLOOR PLATE

NOTES

1. ALL DIMENSIONS ARE IN MILLIMETRES.
2. DRAWING IS NOT TO SCALE UNLESS PLOTTED "D" SIZE.
3. ALL WELDS ARE 6mm FILLET WELDS UNLESS NOTED OTHERWISE.
4. ALL EXPOSED WELDS & ALL SHARP CORNERS SHALL BE GROUND SMOOTH & ALL BURRS SHALL BE REMOVED PRIOR TO PAINTING.
5. L75x75x6 WHERE NEEDED TO SUPPORT FLOOR PLATE SEAMS.
6. MINIMUM 75mm URETHANE INSULATION TO BE APPLIED TO UNDERSIDE OF SKID.
7. SEAL WELD ALL FLOOR PLATE JOINTS AND CONTAINMENT PLATE JOINTS.
8. BAND ALL GRATING EDGES WITH 32mm FLAT BAR.



ENGINEERING COMPANY PERMIT STAMP

REGISTERED PROFESSIONAL ENGINEER STAMP


REF	DRAWING NUMBER	DRAWING TITLE
-----	----------------	---------------

REFERENCE DRAWINGS						

1	2013/05/22	IFC FOR EWR 15759 BAR 11-0190	WG	CM	RZ	E
---	------------	-------------------------------	----	----	----	---

REV	DATE	DESCRIPTION	BY	CHK	ENG	APP
REVISION HISTORY						

 **Husky Oil Operations Limited**

	HOG GENERAL

TUG GENERAL	
TITLE	WATER TRANSFER SKID STRUCTURAL STEEL

SURFACE LOCATION		L7 GENERAL	
ALTERNATE DWG NUMBER			REV N
HUSKY DWG NUMBER			1

HOST DWG NUMBER		L7-33-0000-01		1	
VENDOR DWG NUMBER				SCALE	
AMU/FLOC NUMBER				AS SHOWN	
DCN NO		PROJECT NO EWR 15759			

