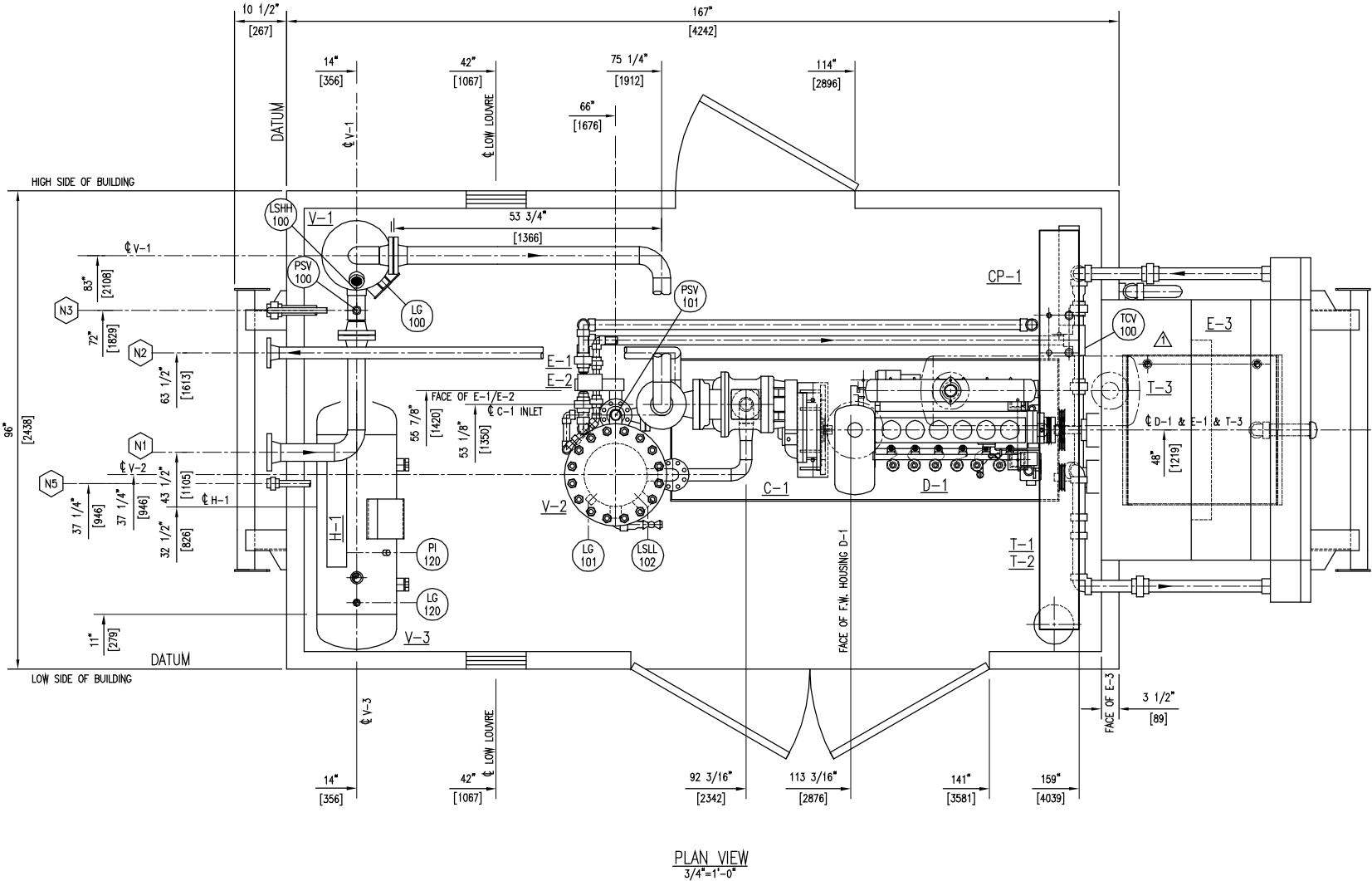


THIS DRAWING IS THE EXCLUSIVE PROPERTY OF CONCEPT COMPRESSION CORP. AND CANNOT BE REPRODUCED WITHOUT THE PERMISSION OF CONCEPT COMPRESSION CORP.

SKID EDGE CONNECTIONS				
MARK	SERVICE	SIZE	RATING	TYPE
N1	GAS INLET			
N2	GAS OUTLET	2"	300#	RFWN
N3	DRAIN	1 1/2"	3000#	NPT UNION
N5	LP LIQUID DRAIN	1"	3000#	NPT UNION





CPC VENDOR DWG NO.: KEL-030-VEN-000-0003

GENERAL NOTES		NOTES		STAMPS	
1. ALL DIMENSIONS OUTSIDE OF BRACKETS ARE IN INCHES. ALL DIMENSIONS WITHIN [] ARE IN mm.		11. SURFACE PREP.: SSPC-SP6 COMMERCIAL SNABLAST PRIMER: 1 s/c ZINC PHOSPHATE PRIMER PAINT: 1 s/c CLOVERDALE 1426 DUNE TAN			
2. ALL TAIL DIMENSIONS ARE FROM DATUM.		12. SHIPPING WEIGHT IS APPROX.: 14,000-15,500 LBS			
3. ALL WELDED PIPING TO BE HYDROTESTED TO 675 psi.					
4. ALL THREADED PIPING TO BE AIR/LEAK TO 80 psi.					
5. ALL PIPING TO BE SUBJECT TO 10% RADIOGRAPHY.					
6. WELDING PROCEDURES TO BE PERFORMED TO MEET A 22 HRC HARDNESS TEST.					
7. SEE CHART FOR PIPING/FITTING FOR MATERIAL/RATING REQ.					
8. TUBING TO BE SS. FITTINGS TO BE CADMIUM PLATED w/ SS PRIMARY FERRULE & CS SECONDARY FERRULE.					
9. ALL PIPING & TUBING TO BE SUPPORTED AS REQ'D.					
10. ALL PIPING TO COMPLY WITH ANSI B31.3 & THE SPECS PER C.C.C.					
-NG-NON CODE					
-NG-150 SR					
-NG-150 SW					
-NG-300 SR					
-NG-300 SW					