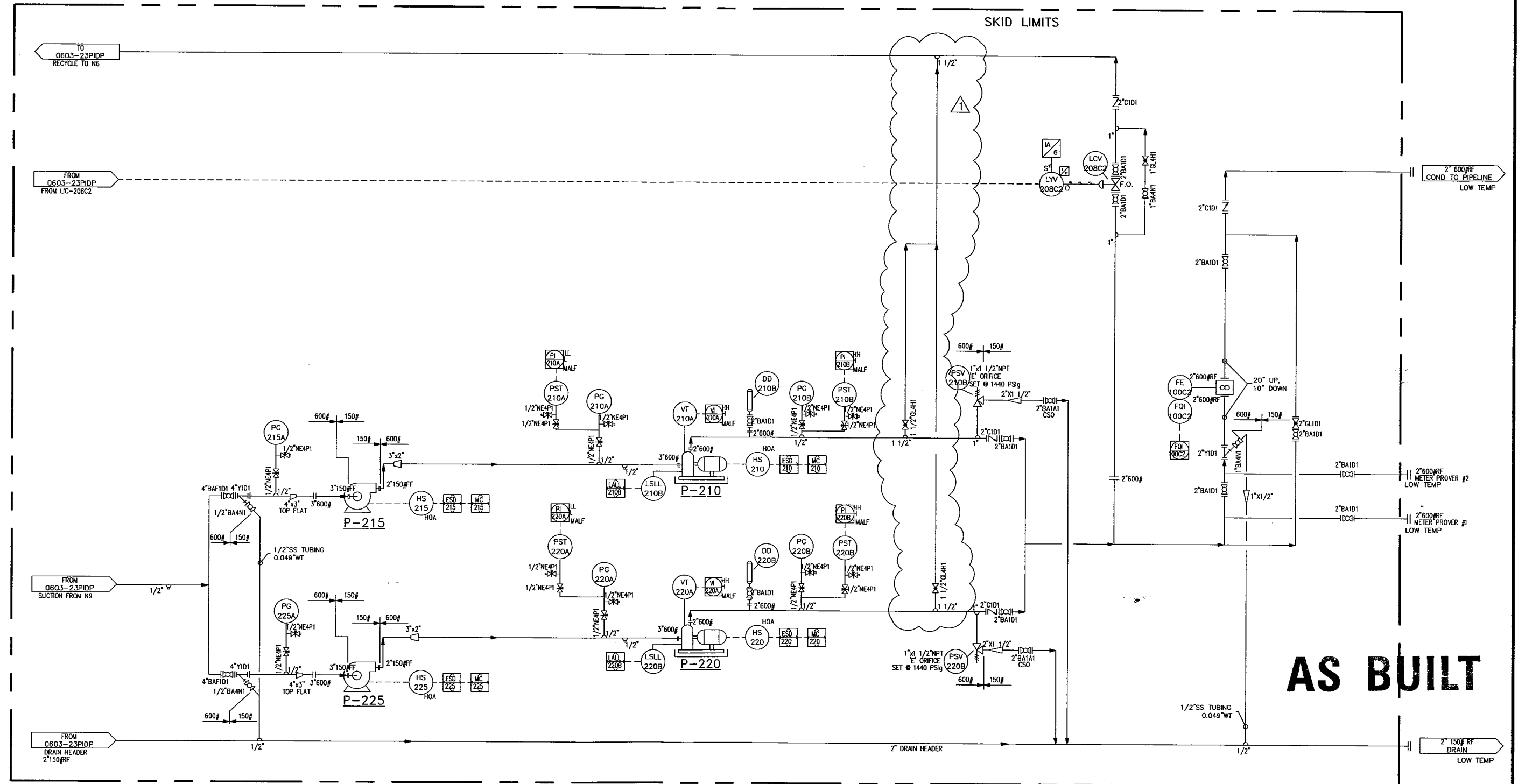


P-215/225  
CENTRIFUGAL CHARGE PUMPS  
GOULDS: 3x2-6 STX, MODEL: 3196  
DUCTILE IRON CASE  
MAX. PRESS: 250 PSIG  
SHAFT: SAE4140 STEEL, 316 SS SLEEVE  
3"150# FLAT FACE (SUCTION) x 2"150# FLAT FACE (DISCHARGE)  
2 HP, 1800 RPM, 480 VAC/3/60, TEXP, CLASS 1, DIV 1

P-210/220  
NOI TRIPLEX CONDENSATE PUMPS  
MODEL 22T-2L  
RATE: 12.5 USGPM @ 1120 PSIG  
S.G. 0.70, SUCTION: 200 PSIG  
CONNECTIONS: 3"600#RF SUCTION, 2"600#RF DISCHARGE  
TEMPERATURE: 20°C  
c/w TECO WESTINGHOUSE ELECTRIC MOTOR  
10 HP, 1200 RPM, 480VAC/3/60, TEFC, CLASS 1, DIV.2  
c/w DISCHARGE DAMPENERS, VIBRATION & LOW LEVEL SWITCHES



SKID:

NOTES:

- 1) ALL O/S FLANGES & PIPING TO BE LOW TEMP MATERIAL

ENGINEERS & PERMIT STAMPS

2	AS BUILT	CP	06-08-31
1	REVISED PER CUSTOMER REQUEST	CP	06-06-16
0	ISSUED FOR CONSTRUCTION	CP	06-05-19
D	REV. AS PER CUSTOMER MARKUPS	PP	06-05-09
C	REV. AS PER CUSTOMER REQUEST	CP	06-05-01
B	REV. AS PER CUSTOMER	CMP	06-04-26
A	ISSUED FOR APPROVAL	PP	06-04-10
NO.	REVISIONS	DWN APPR	DATE



DATE	06-04-10	HUSKY ENERGY LIMITED	
DESIGNED BY	IPS	c/o TARTAN ENGINEERING LTD. LSD: ANSELL 03-06-049-18 W5M	
DRAWN BY	P.PIOT	P&ID FOR 48" ID x 16'-0" S/S HORIZONTAL SWEET SEPARATOR PACKAGE c/w TWINNED CONDENSATE PUMPS	
CHECKED BY	Onp	PROJECT NO.	5325-001
APPROVED BY		FILENAME	5325-001PIDPUMP
SCALE	N.T.S.	SHEET NO.	1 OF 1
		REFERENCE NO.	
		REV. NO.	2